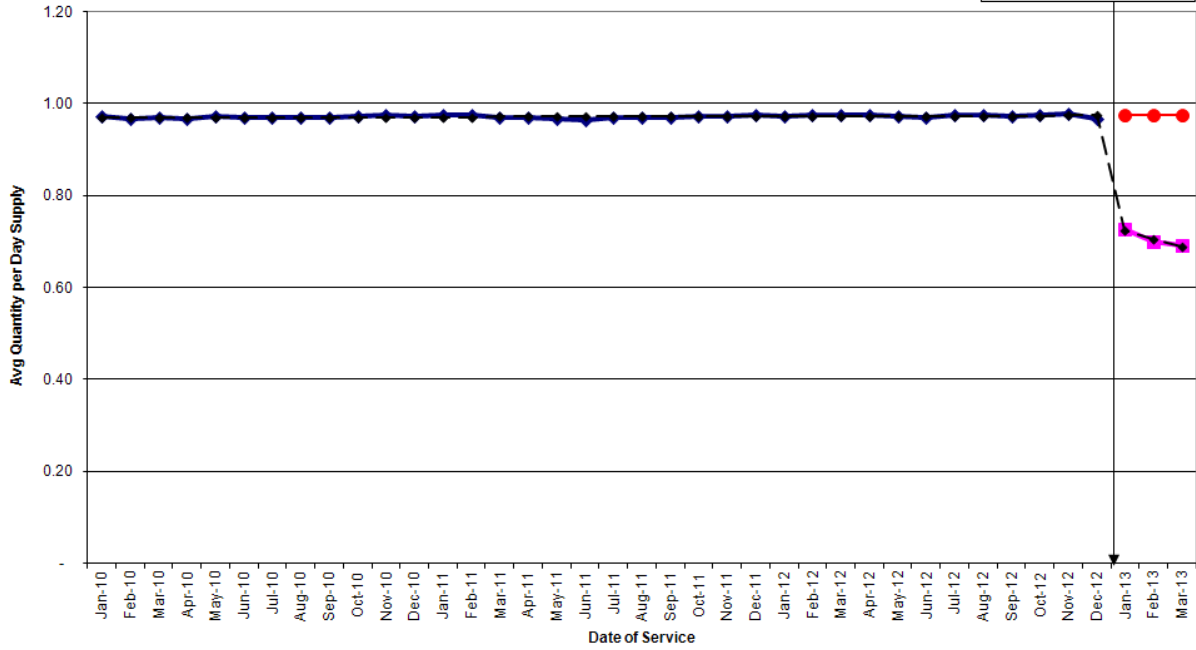


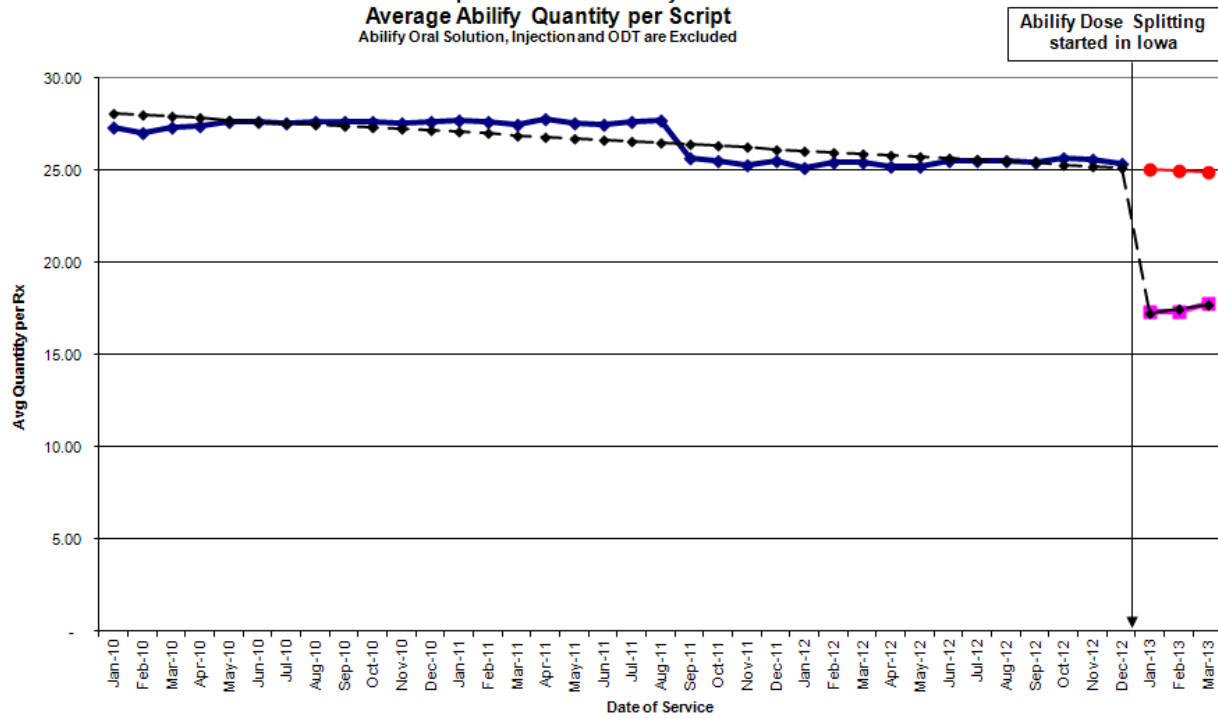
Iowa Medicaid Abilify Utilization
 Interrupted Time Series Analysis
 Average Abilify Quantity per Day Supply
 Abilify Oral Solution, Injection and ODT are Excluded

Abilify Dose Splitting
 started in Iowa



- IA Average Qty per DS before Abilify Dose Splitting
- IA Average Qty per DS since Abilify Dose Splitting
- IA Segmented Regression on Average Qty per DS
- IA Predicted Average Qty per DS if Abilify Dose Splitting had not started

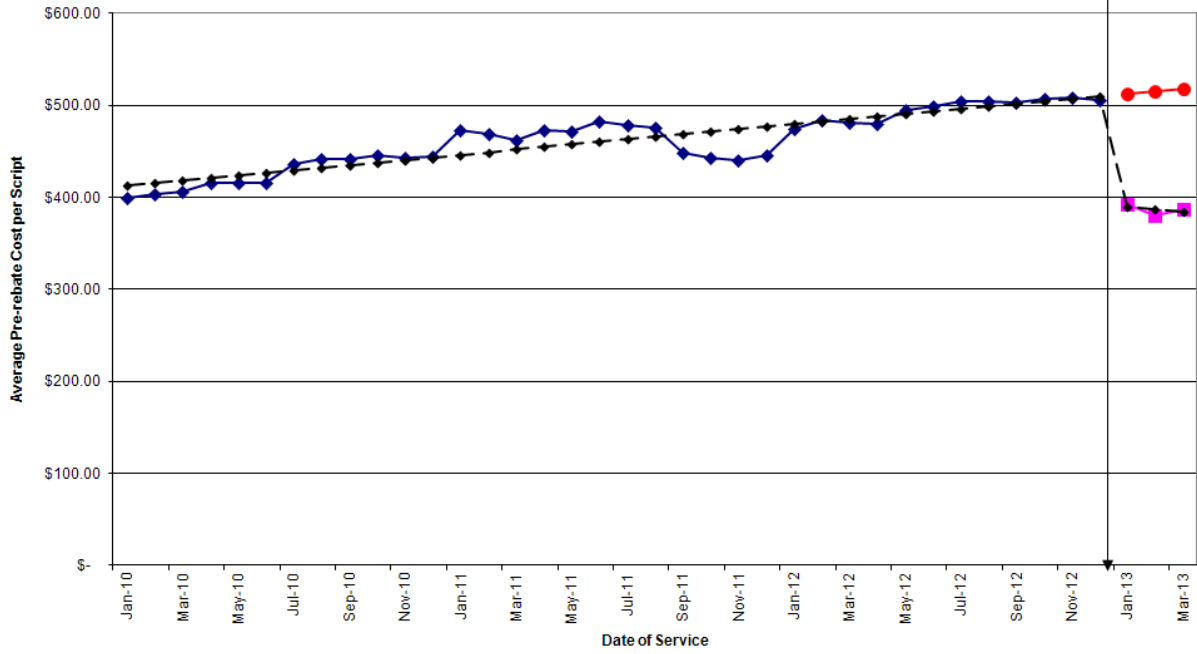
Iowa Medicaid Abilify Utilization
 Interrupted Time Series Analysis
 Average Abilify Quantity per Script
 Abilify Oral Solution, Injection and ODT are Excluded



- IA Average Qty per Script before Abilify Dose Splitting
- IA Segmented Regression on Average Qty per Script
- IA Average Qty per Script since Abilify Dose Splitting
- IA Predicted Average Qty per Script if Abilify Dose Splitting had not started

Iowa Medicaid Abilify Utilization
 Interrupted Time Series Analysis
 Average Abilify Pre-rebate Cost per Script
 Abilify Oral Solution, Injection and ODT are Excluded

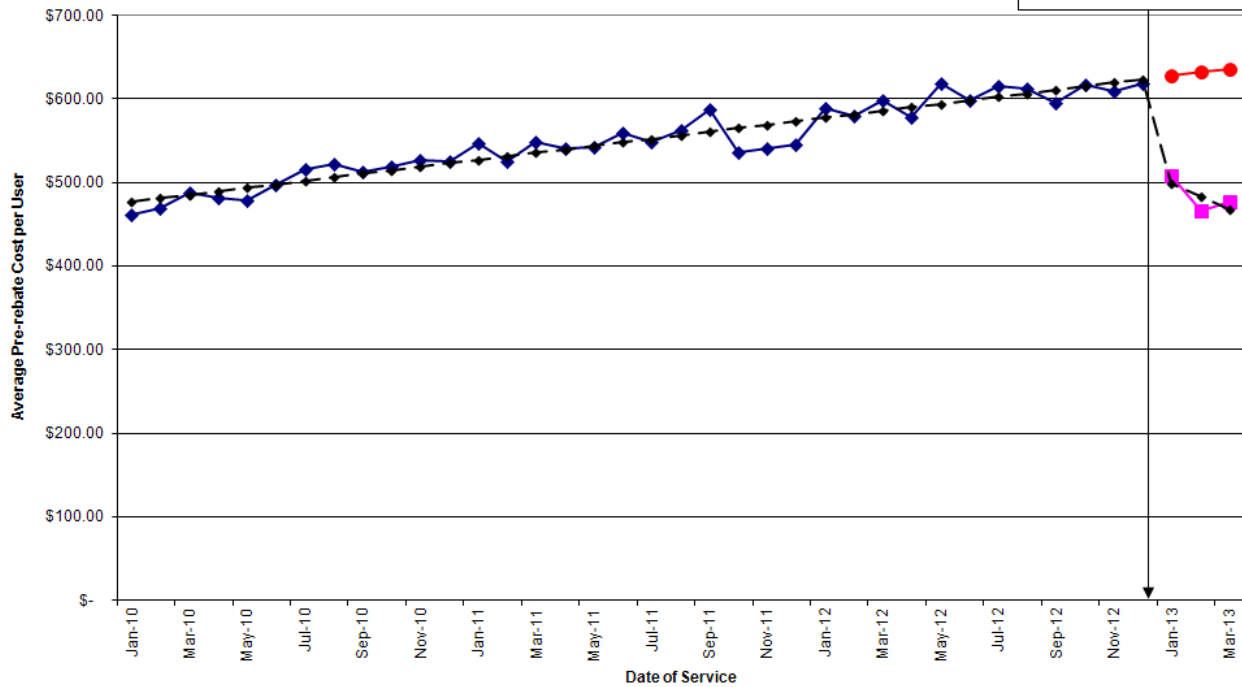
Abilify Dose Splitting
 started in Iowa



- IA Average Pre-rebate Cost per Script before Abilify Dose Splitting
- IA Average Pre-rebate Cost per Script since Abilify Dose Splitting
- IA Segmented Regression on Average Pre-rebate Cost per Script
- IA Predicted Average Pre-rebate Cost per Script if Abilify Dose Splitting had not started

Iowa Medicaid Abilify Utilization
 Interrupted Time Series Analysis
 Average Abilify Pre-rebate Cost per User
 Abilify Oral Solution, Injection and ODT are Excluded

Abilify Dose Splitting
 started in Iowa



- ◆— IA Average Pre-rebate Cost per User before Abilify Dose Splitting
- ◆— IA Segmented Regression on Average Pre-rebate Cost per User
- IA Average Pre-rebate Cost per User since Abilify Dose Splitting
- IA Predicted Average Pre-rebate Cost per User if Abilify Dose Splitting had not started

Days Late for Refill

Days Late for Refill	Patient who used abilyfy dose splitting in January 2013 - March 2013		Patient who did not use abilyfy dose splitting in January 2013 - March 2013	
	N of New Starters	%	N of New Starters	%
0	352	69.4%	182	71.7%
1-6	22	4.3%	7	2.8%
7-14	24	4.7%	7	2.8%
15-30	44	8.7%	20	7.9%
>30	65	12.8%	38	15.0%
Total N of Users:	507	100.0%	254	100.0%

Group of Patients	Total N of New Starters	Who were 0 - 6 days late for refill:	%	Who were 7 and more days late for refill:	%
Who used abilyfy dose splitting in January 2013 - March 2013:	507	374	73.8%	133	26.2%
Who did not use abilyfy dose splitting in January 2013 - March 2013:	254	189	74.4%	65	25.6%
Totals:	761	563	74.0%	198	26.0%

Chi Square Calculation before Yates Correction			Chi Square Calculation after Yates Correction			
Chi Square Calculation before Yates Correction	Critical Chi-Square	Statistically Different	Yates Correction	Chi Square Calculation after Yates Correction	Critical Chi-Square	Statistically Different
0.036	3.841	No	0.011	0.036	3.841	No

Group of Patients	Total N of New Starters without those who were > 30 days later for refill	Who were 0 - 6 days late for refill:	%	Who were 7 -30 days late for refill:	%
Who used abilyfy dose splitting in January 2013 - March 2013:	442	374	84.6%	68	15.4%
Who did not use abilyfy dose splitting in January 2013 - March 2013:	216	189	87.5%	27	12.5%
Totals:	658	563	85.6%	95	14.4%

Chi Square Calculation before Yates Correction			Chi Square Calculation after Yates Correction			
Chi Square Calculation before Yates Correction	Critical Chi-Square	Statistically Different	Yates Correction	Chi Square Calculation after Yates Correction	Critical Chi-Square	Statistically Different
0.977	3.841	No	0.758	0.977	3.841	No

Medication Possession Ratio (MPR) =

sum of days supply on scripts/ # days between first fill and last fill plus the # of day supply in the last fill

Group of Patients	Total N of New Starters	N of New Starters Adherent to Abilyfy in January 2013 - March 2013 (based on MPR >= 0.8)	%	N of New Starters Not Adherent to Abilyfy in January 2013 - March 2013 (based on MPR < 0.8)	%
Who used abilyfy dose splitting in January 2013 - March 2013:	507	454	89.5%	53	10.5%
Who did not use abilyfy dose splitting in January 2013 - March 2013:	254	225	88.6%	29	11.4%
Totals:	761	679	89.2%	82	10.8%

Chi Square Calculation before Yates Correction			Chi Square Calculation after Yates Correction			
Chi Square Calculation before Yates Correction	Critical Chi-Square	Statistically Different	Yates Correction	Chi Square Calculation after Yates Correction	Critical Chi-Square	Statistically Different
0.163	3.841	No	0.079	0.163	3.841	No